

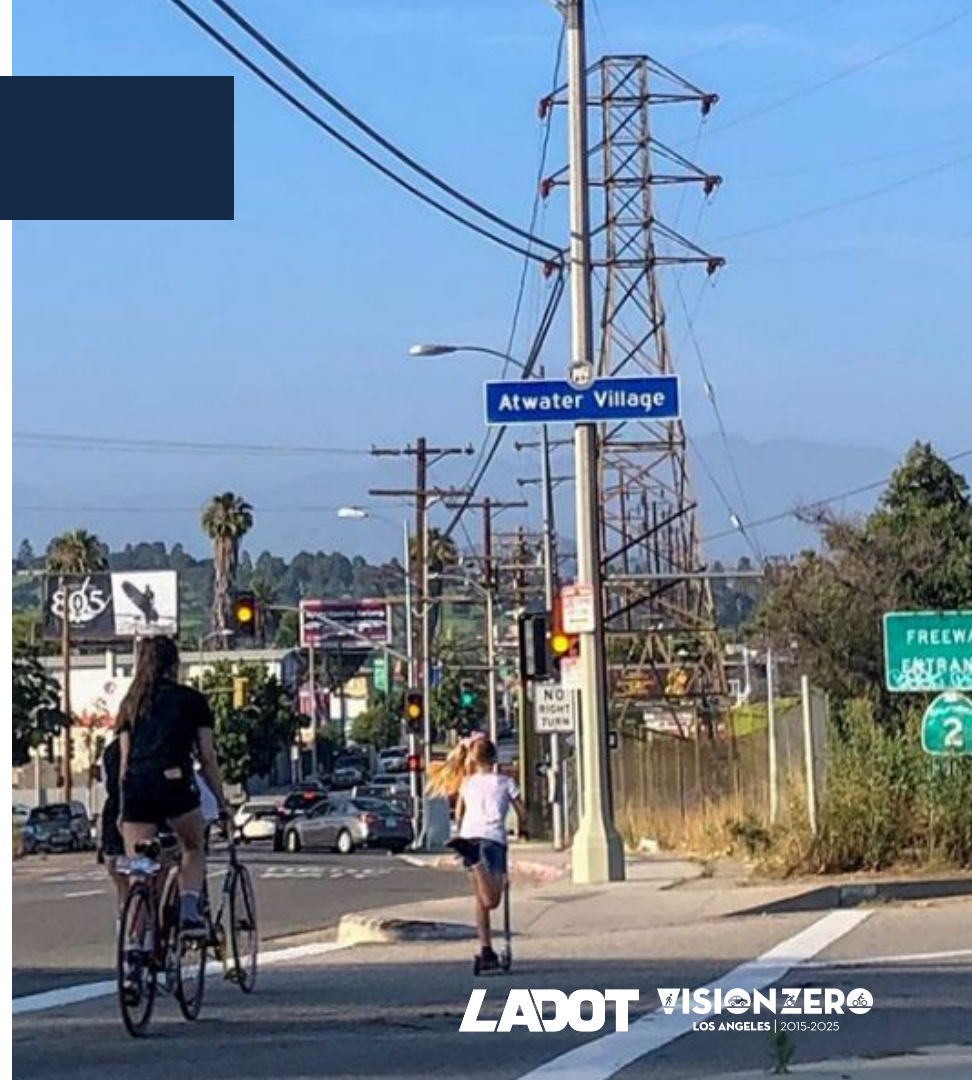


Fletcher Drive Safety Project

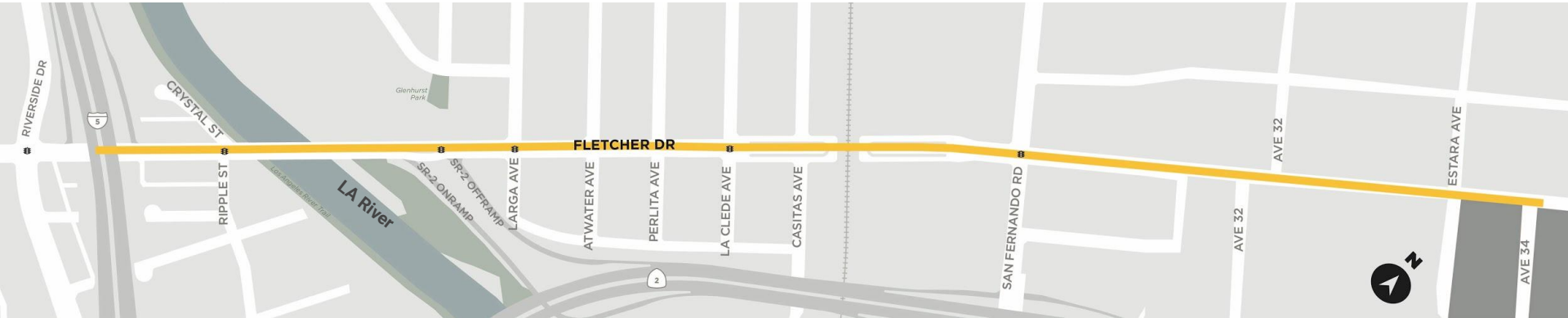
DECEMBER 2020 UPDATE

Presentation Overview

1. Project Context
2. Early Improvements
3. Project Spotlights



Project Context



- **Length:** 0.8 miles
- **Limits:** I-5 Fwy to San Fernando Rd
- **Vision Zero Priority Corridor**

Project Context



17

**people were
killed or severely
injured** while
traveling on Fletcher
between 2009 and 2017



53%

of these people
**were walking or
riding a bike**

People walking are killed

37-45%

of the time **when struck by
a car going 30 mph**

- and -

83-85%

of the time **when struck by
a car going 40 mph**

THE SPEED
LIMIT ON
FLETCHER IS
35 MPH,



**BUT 700
PEOPLE PER
DAY DRIVE
OVER 41 MPH**

Early Improvements

Status:
INSTALLED

Edgeline



Speed Feedback Signs



Continental Crosswalks

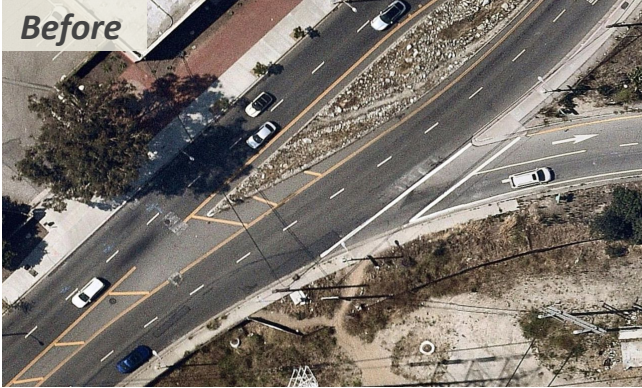


Spotlight: Fletcher & the 2 Freeway On-Ramp

Status:
INSTALLED



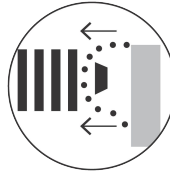
Before



Turning Pedestrian
Yield Signs



Intersection Tightening



High-Visibility Crosswalks



Before



After



After



Spotlight: Left-turn Phasing

Status:
IN PROGRESS

- Protected left turns can reduce left-turn crashes by **99%**
- Installed: San Fernando Rd (*October 2020*) ✓
- Planned for installation:
 - Crystal St/Ripple St (2021)
 - Larga Ave (2022)
 - La Clede Ave (2023)



Spotlight: Fletcher & Avenue 32

Status:
2020-21 Installation

The Safety Issue

- Long distance between traffic signals and pedestrian crossings
- Two schools and a senior living facility in the immediate area



PLANNED SOLUTION: Pedestrian Refuge Island



Safer Crossings for Students and Seniors

- New high-visibility crosswalk
- Flashing beacon
- Concrete median refuge island

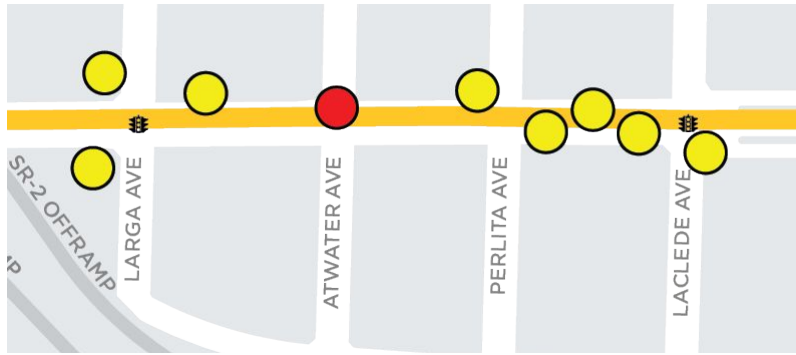
Spotlight: Fletcher between Larga & La Clede

Status:
2023-24 Installation

The Safety Issue

9 people were killed or severely injured in this short section between 2009 and 2017.

6 of those people were walking.



Yellow Circle Severe Injury **Red Circle** Fatality

PLANNED SOLUTION: New Signalized Pedestrian Crossing



97% of people driving comply with HAWK beacons leading to 69% fewer crashes

A **HAWK Beacon** is a button-activated pedestrian signal that allows people walking to cross the road as needed.

Spotlight: Fletcher between La Clede & San Fernando

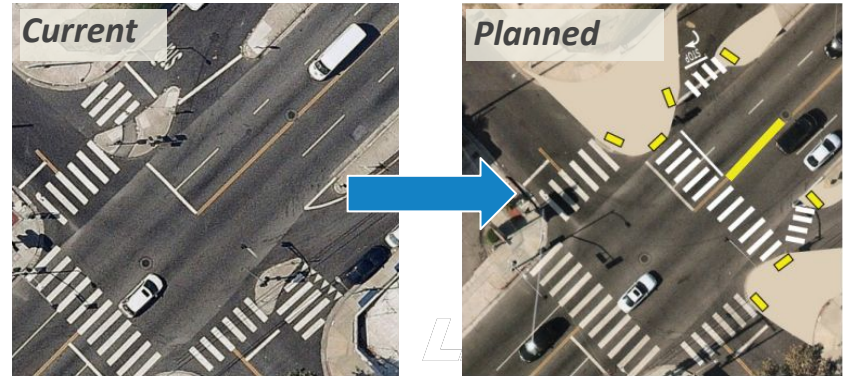
Status:
2023-24 Installation

The Safety Issue

- Underpass is unsafe for people walking or biking and unusable for people with disabilities.
- Students climb over rail tracks to access Irving Middle School.



PLANNED SOLUTION: Pedestrian Friendly Intersection

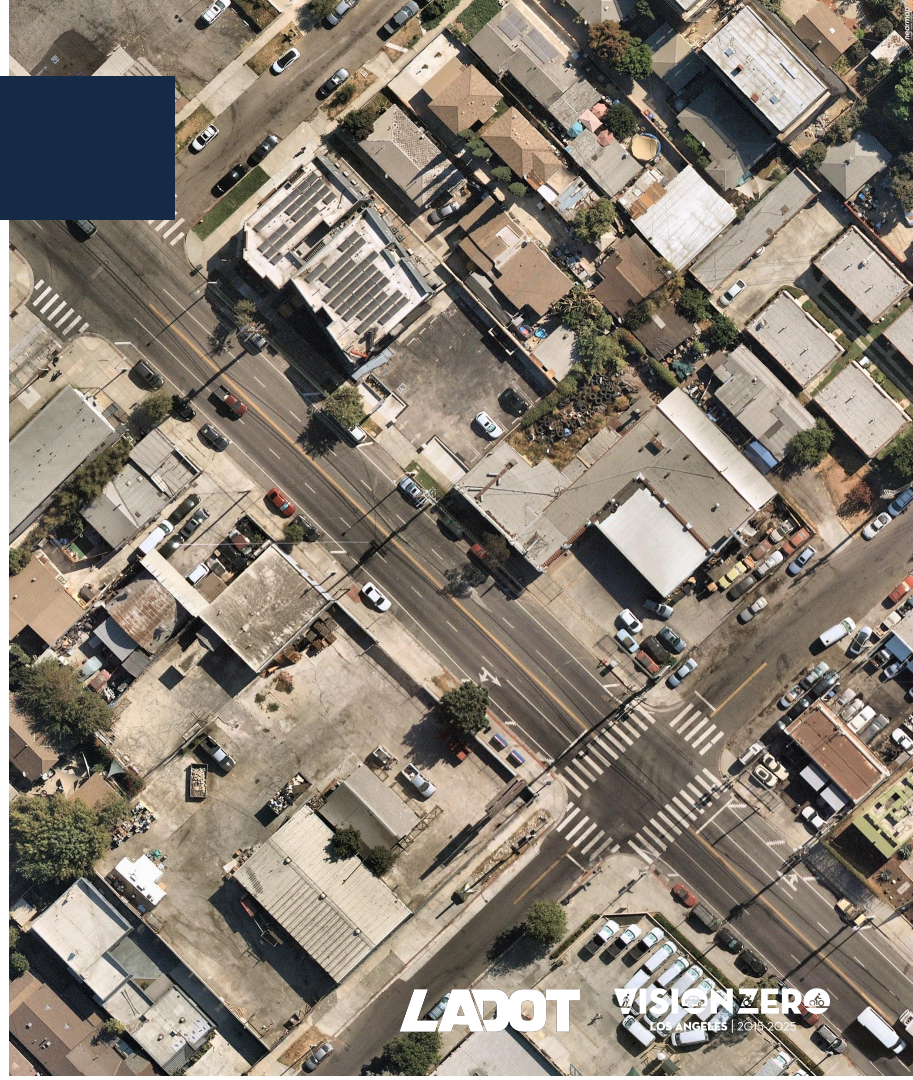


- New high-visibility crosswalks
- Curb extensions with ADA accessible curb ramps
- Slip lane closures
- Updated traffic signals

Contact and Project Information

Email: matt.gertz@lacity.org

Website: ladotlivablestreets.org/projects/fletcher



LADOT

VISION ZERO
LOS ANGELES | 2018-2025