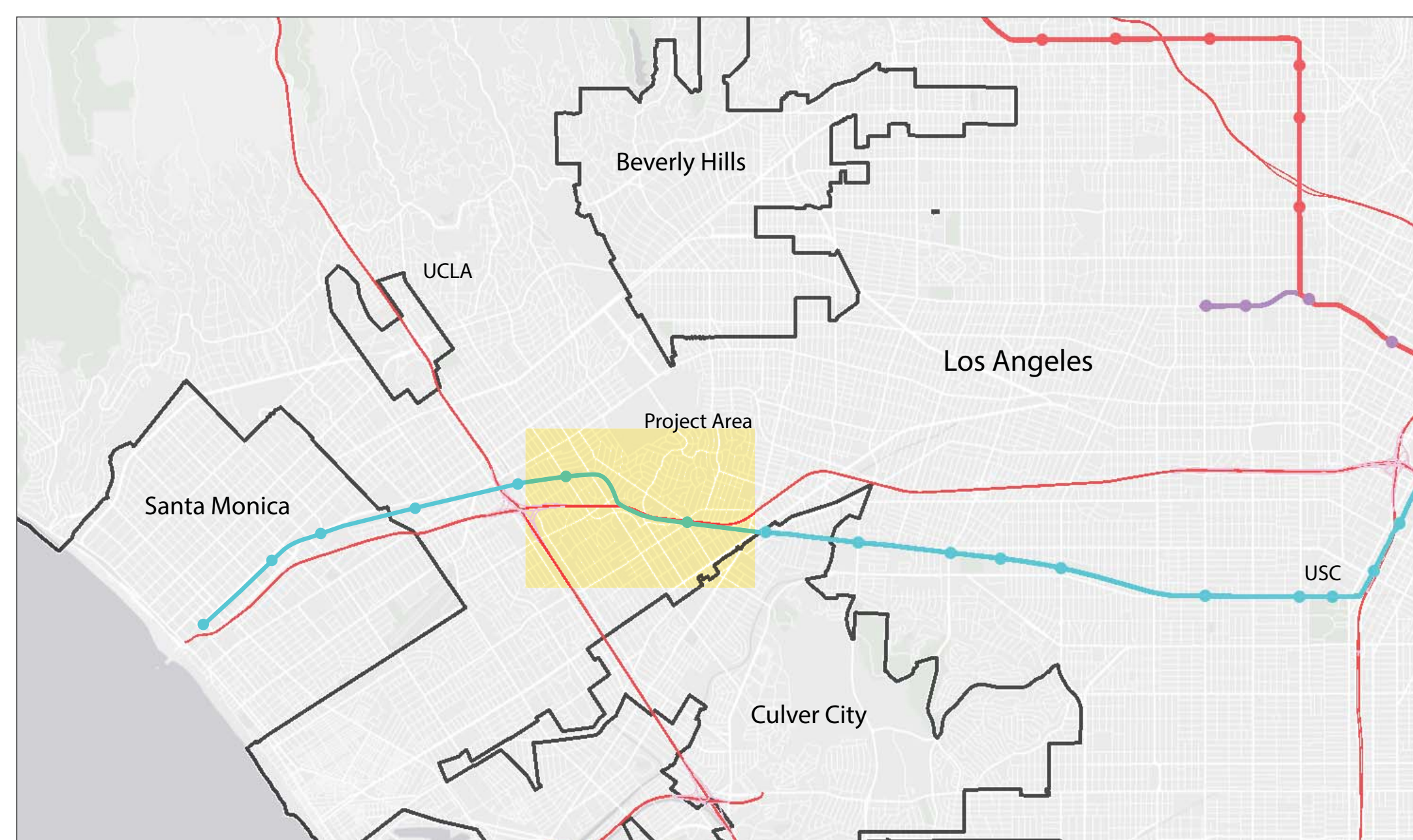
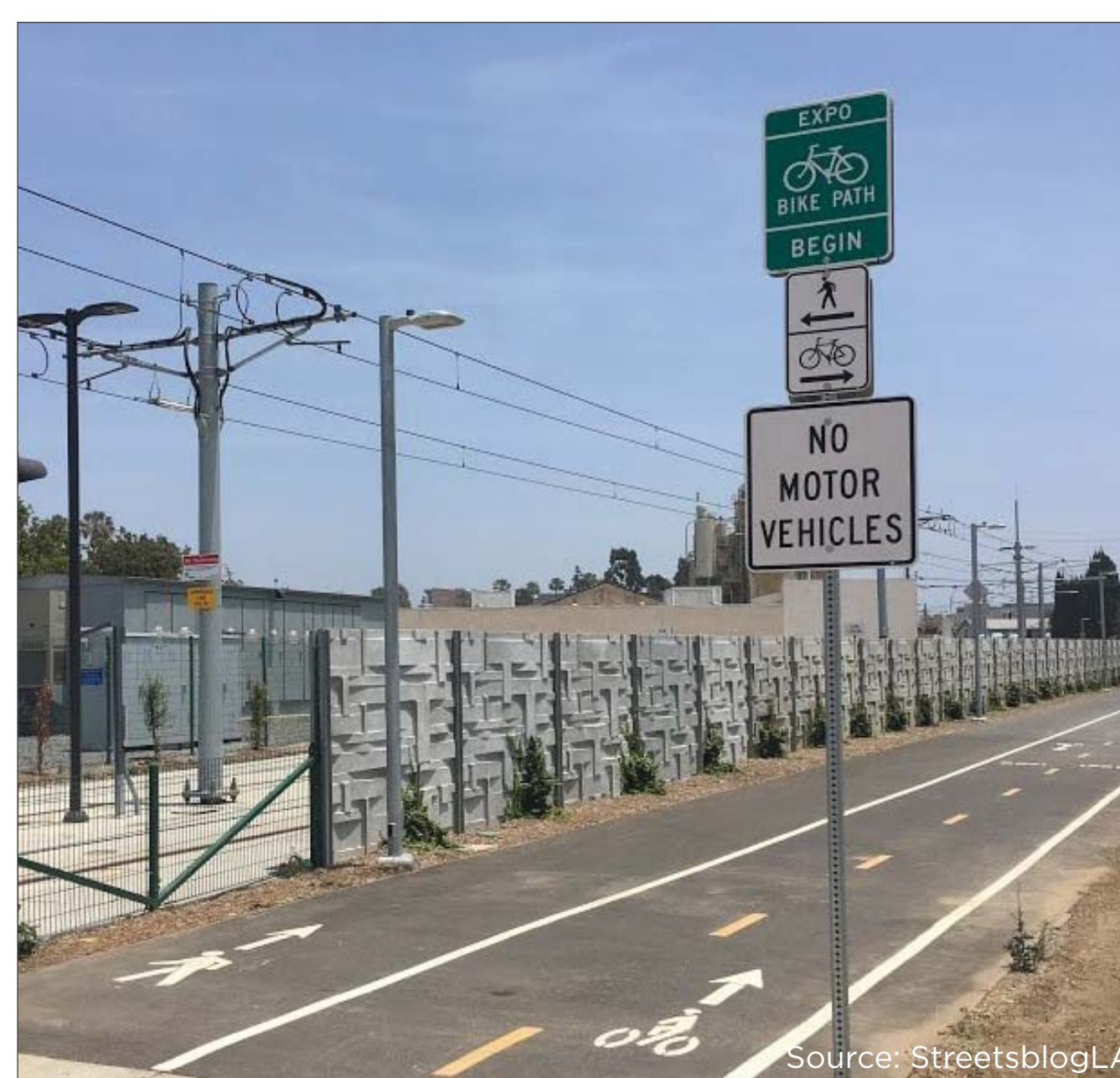


# EXPO II BIKE PATH - NORTHVALE GAP CLOSURE

## Project Overview and Context



Vicinity Map



Existing Expo Bike Path (outside of Project Area)



Existing "stub" of Expo Bike Path at Putney Rd. just east of Overland Ave.



View looking north on Motor Ave., at general location of future bike path entrance and new signal



## Project Area and Connections

### Project Goals

- Provide a continuous, low-stress bikeway separated from vehicular traffic, allowing for a safer, more comfortable bicycling experience.
- Close the gap in the Expo Bike path from Motor Ave to Overland Ave, completing the regional bikeway network for all types of users.
- Ensure a safe connection for pedestrians and bicyclists from Motor Ave to new bikeway.
- Improve first/last mile connections from Metro Expo Line stations to the surrounding neighborhood.

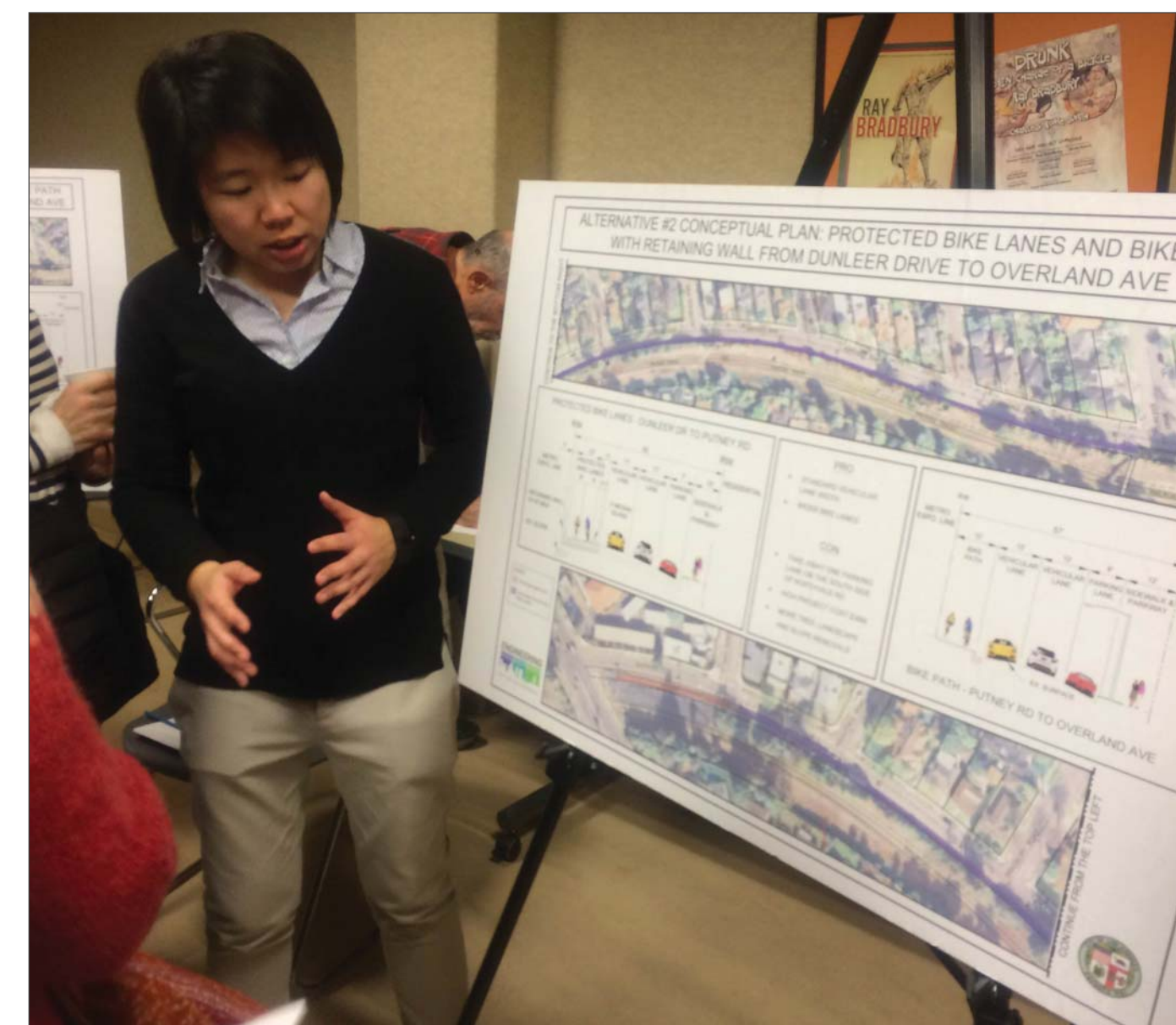
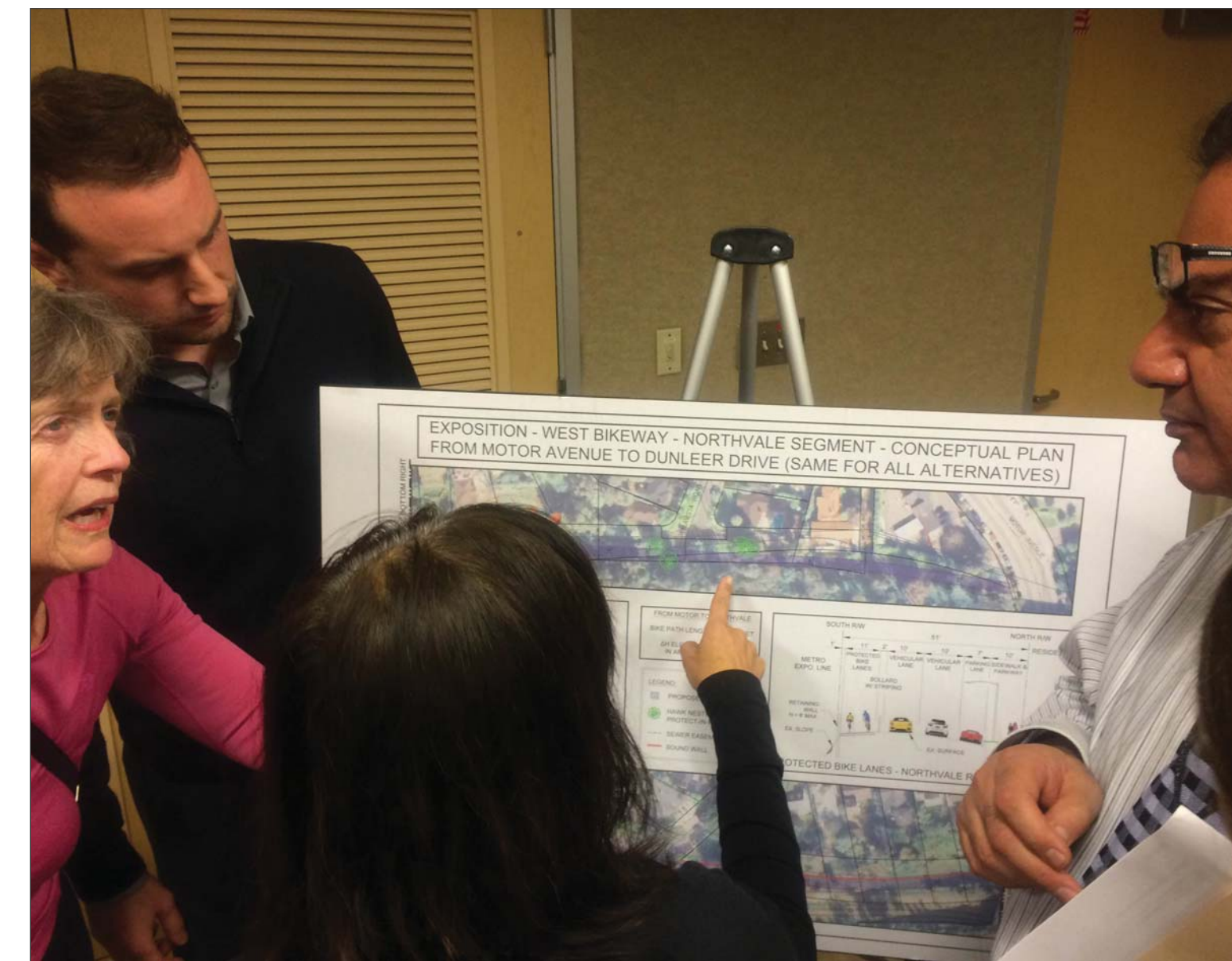
### Project Components

- **Segment 1:** A two-way bike path (off-street) from Motor Ave. to Dunleer Dr., fully separated from the street.
- **Segment 2:** A two-way bike path (off-street) or protected bike lanes (on-street) along the south side of Northvale Rd. from Dunleer Dr. to Overland Ave.
- New traffic signal at Motor Ave. and bike path entrance.
- New bikeway lighting.

# EXPO II BIKE PATH - NORTHVALE GAP CLOSURE

## Project History

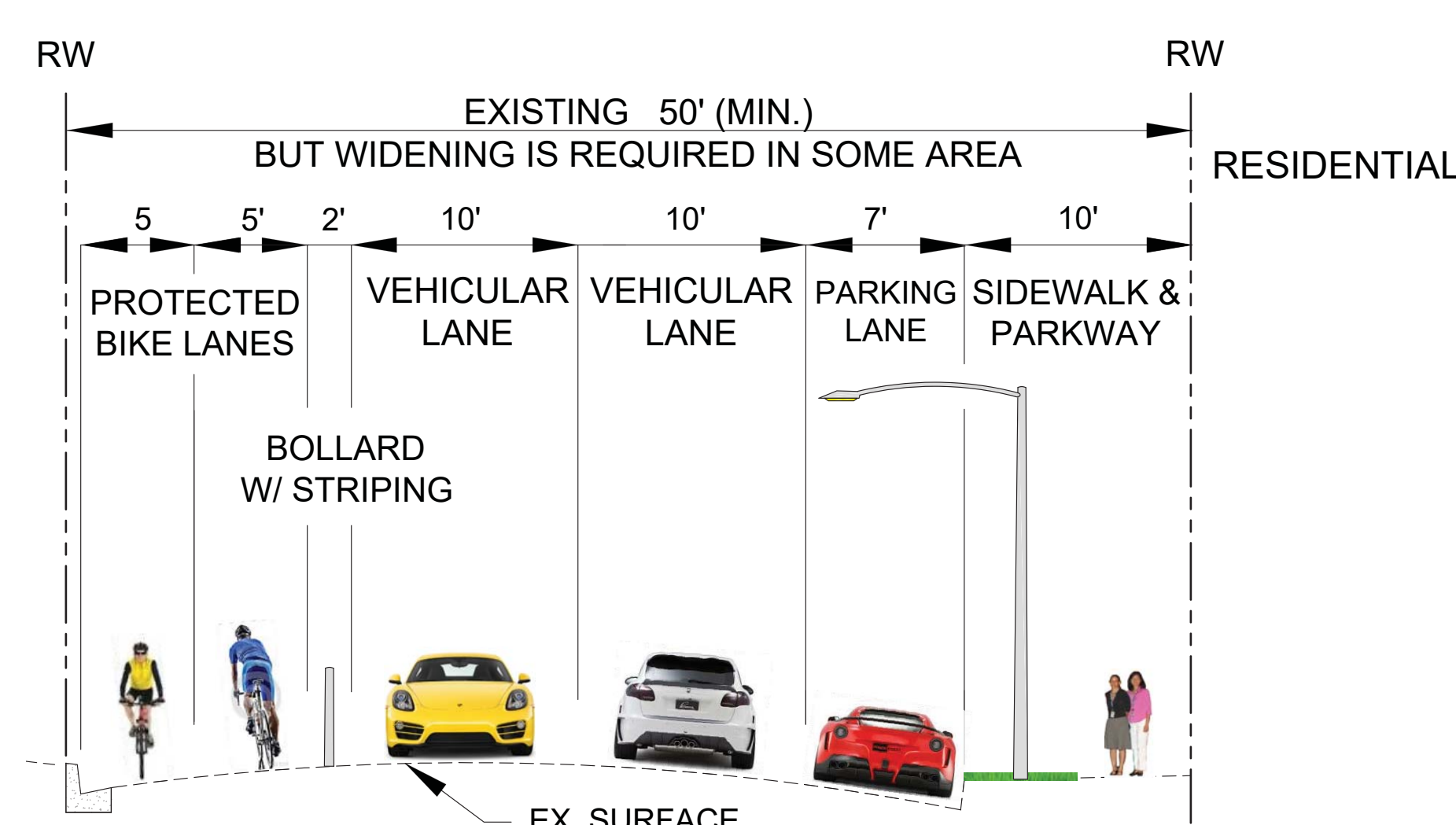
### January 2016 Public Open House



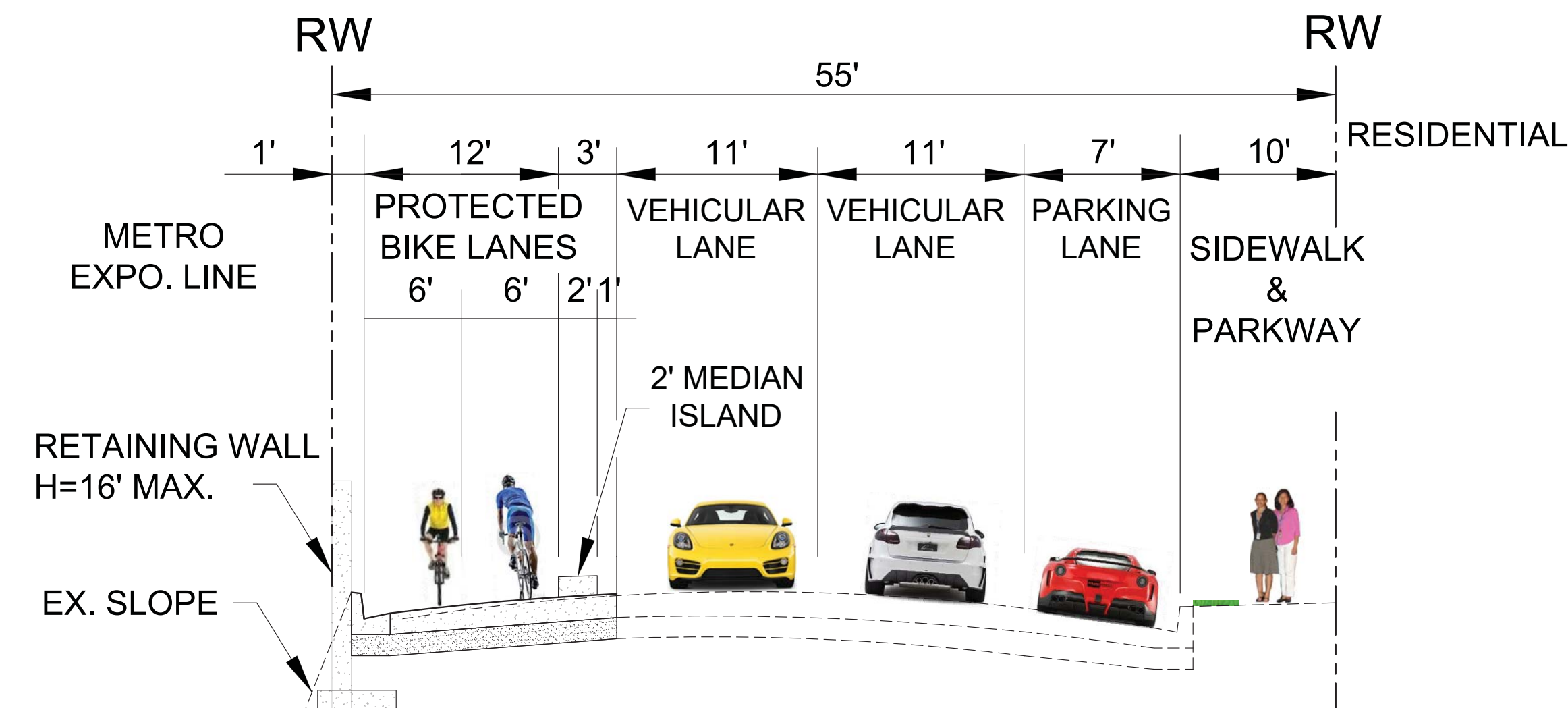
### Primary Concerns

- Removal of parking along Northvale Rd.
- Access points into bike path
- Safety and wayfinding along interim route
- Preservation of existing landscaping
- Privacy for homeowners
- Safety and potential for vandalism

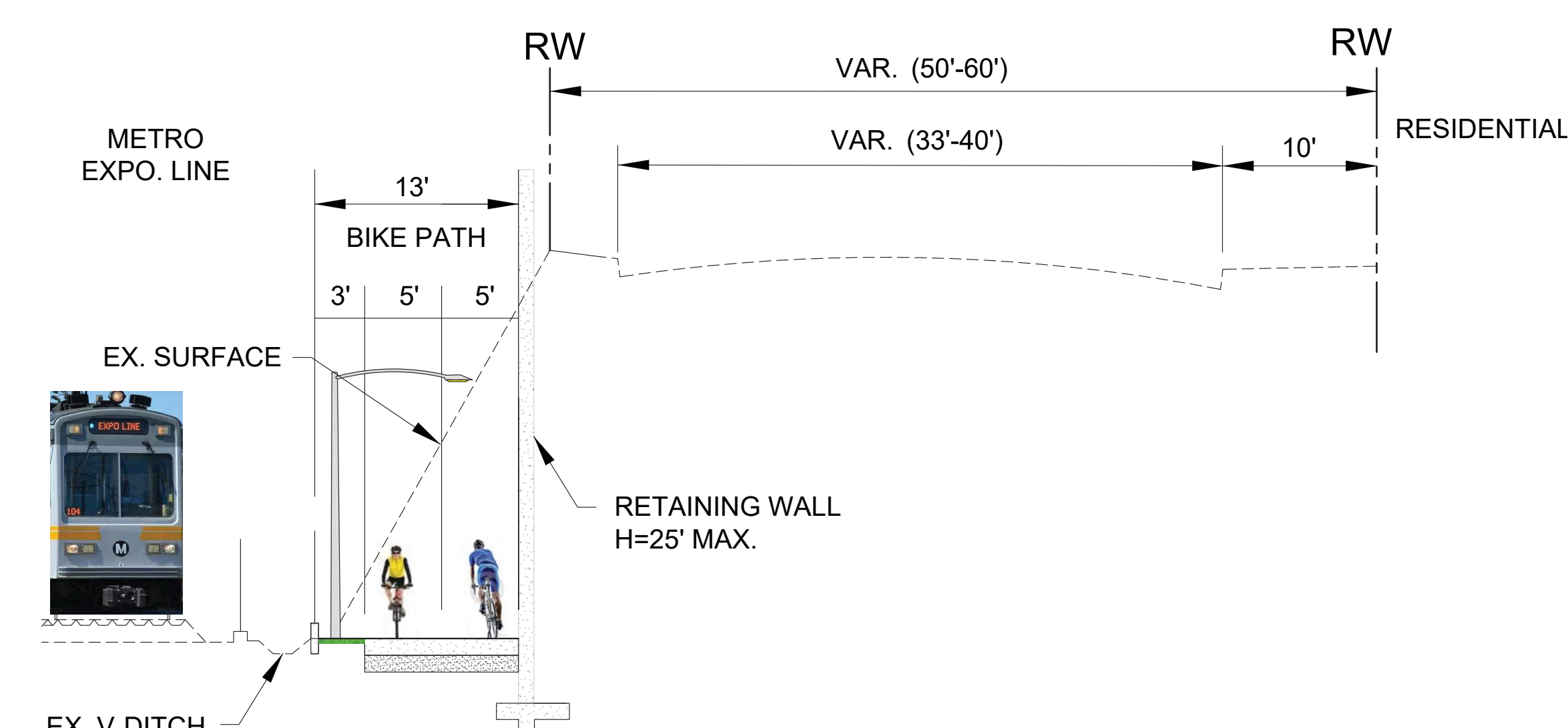
### Interim Bike Route Installed



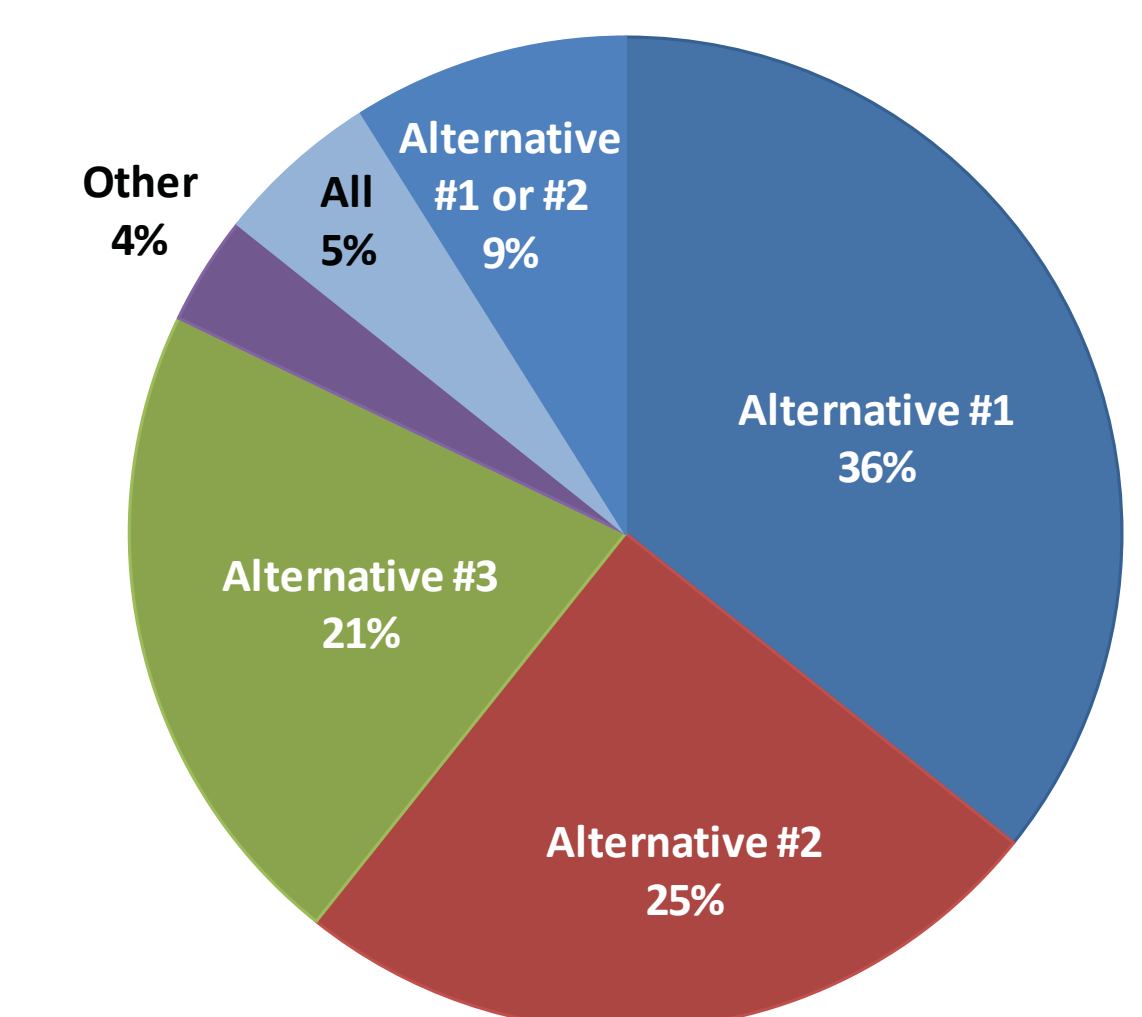
Alt. 1: On-Street with Bollards



Alt. 2: On-Street with Median Island



Alt. 3: Fully Separated Bike Path



Public support for each alternative, based on feedback received in January 2016

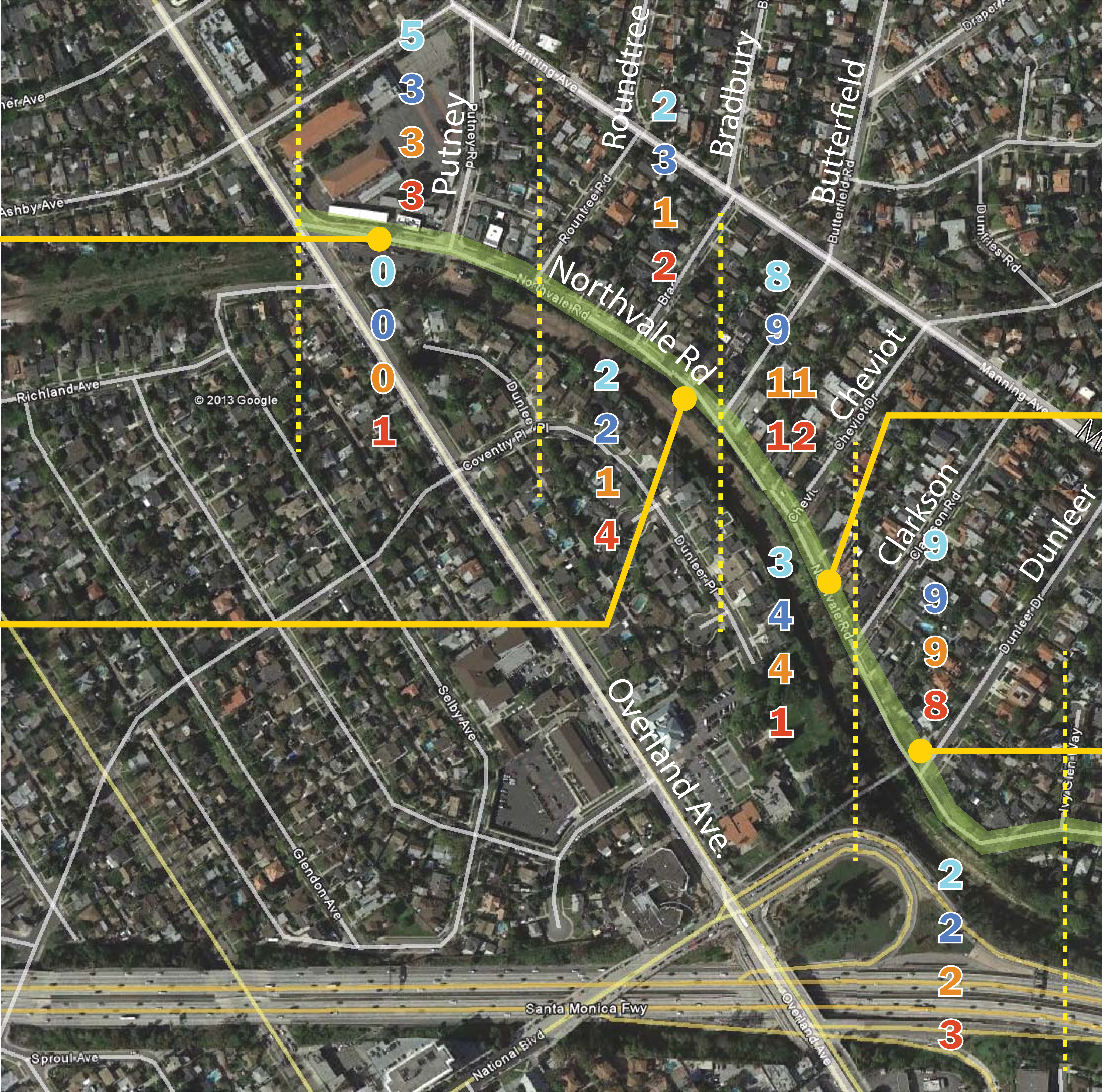
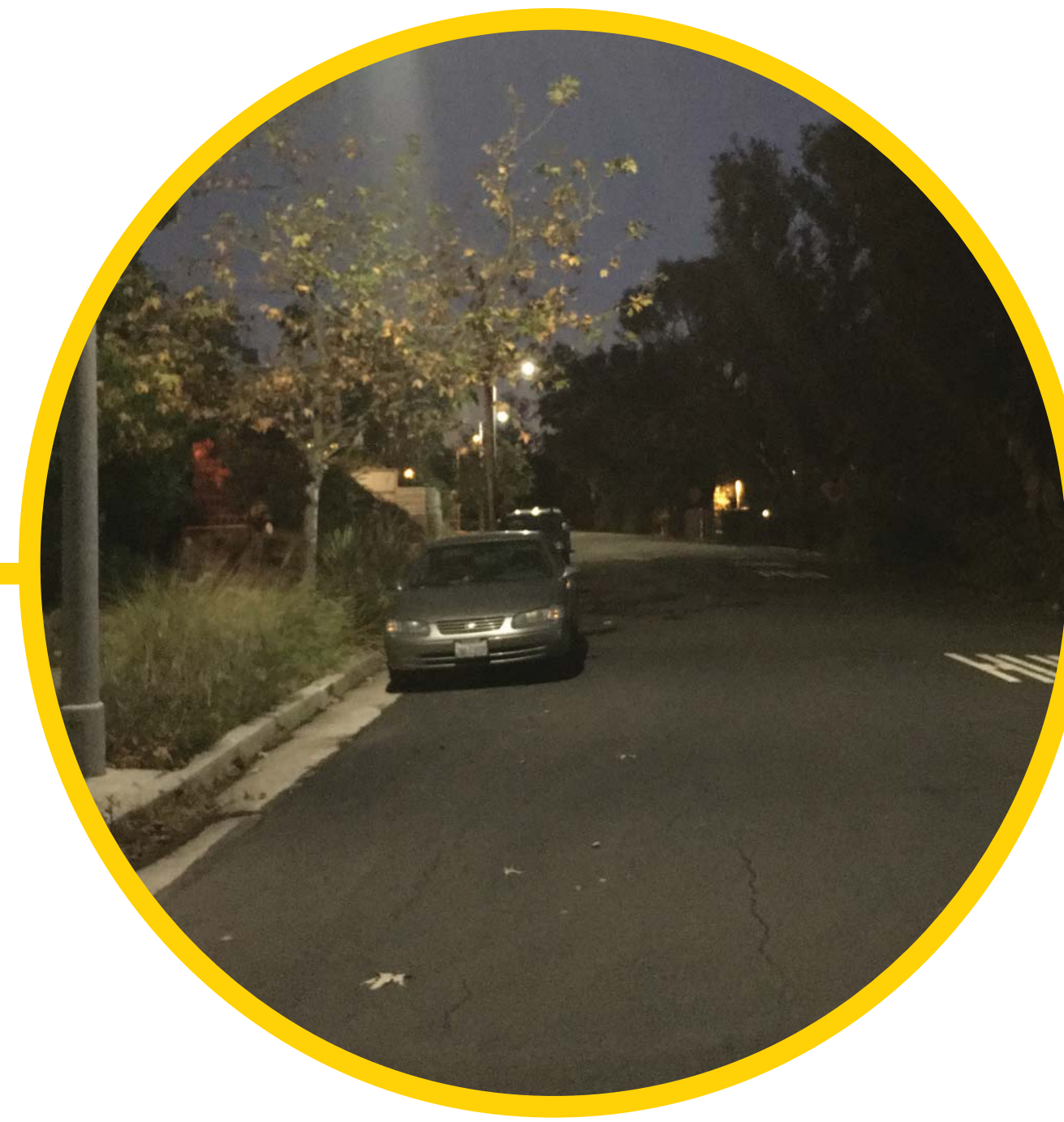
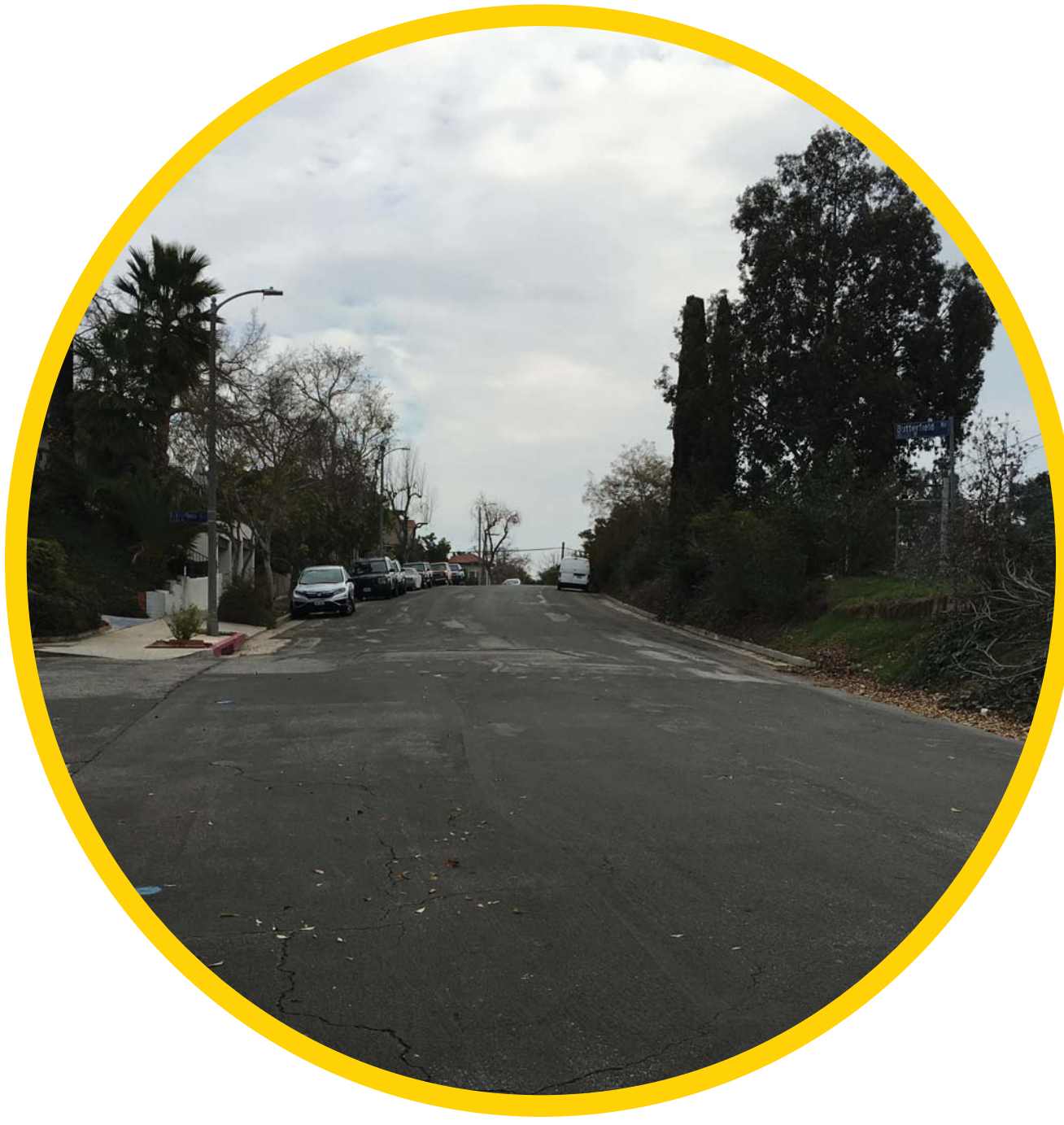
### Design Alternatives Considered Dunleer Dr. to Putney Rd.

June 2018

# EXPO II BIKE PATH - NORTHVALE GAP CLOSURE

## Parking Evaluation

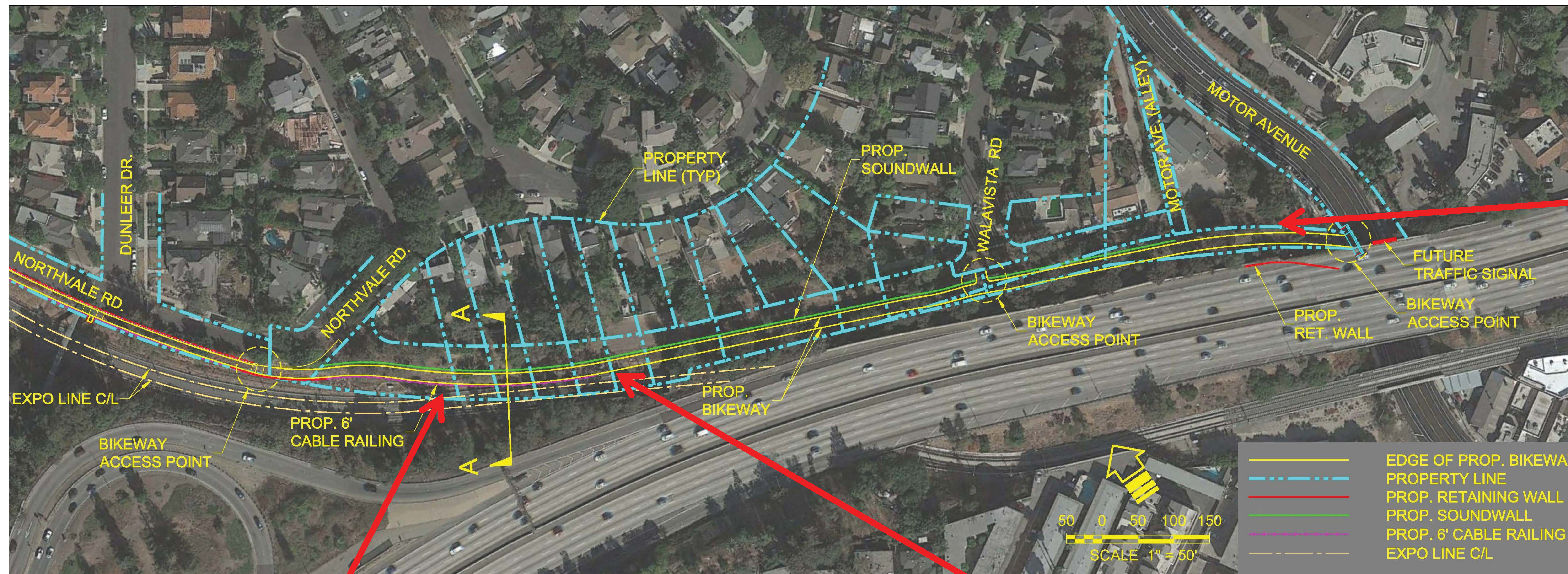
Northvale Rd. between Dunleer Dr. and Overland Ave.



Number of Parked Vehicles	
#	Weekday MIDDAY
#	Weekday PM
#	Weekend AM
#	Weekend PM

# EXPO II BIKE PATH - NORTHVALE GAP CLOSURE

## Segment 1: Motor Ave. to Dunleer Dr.



Concrete battered wall for slope stabilization



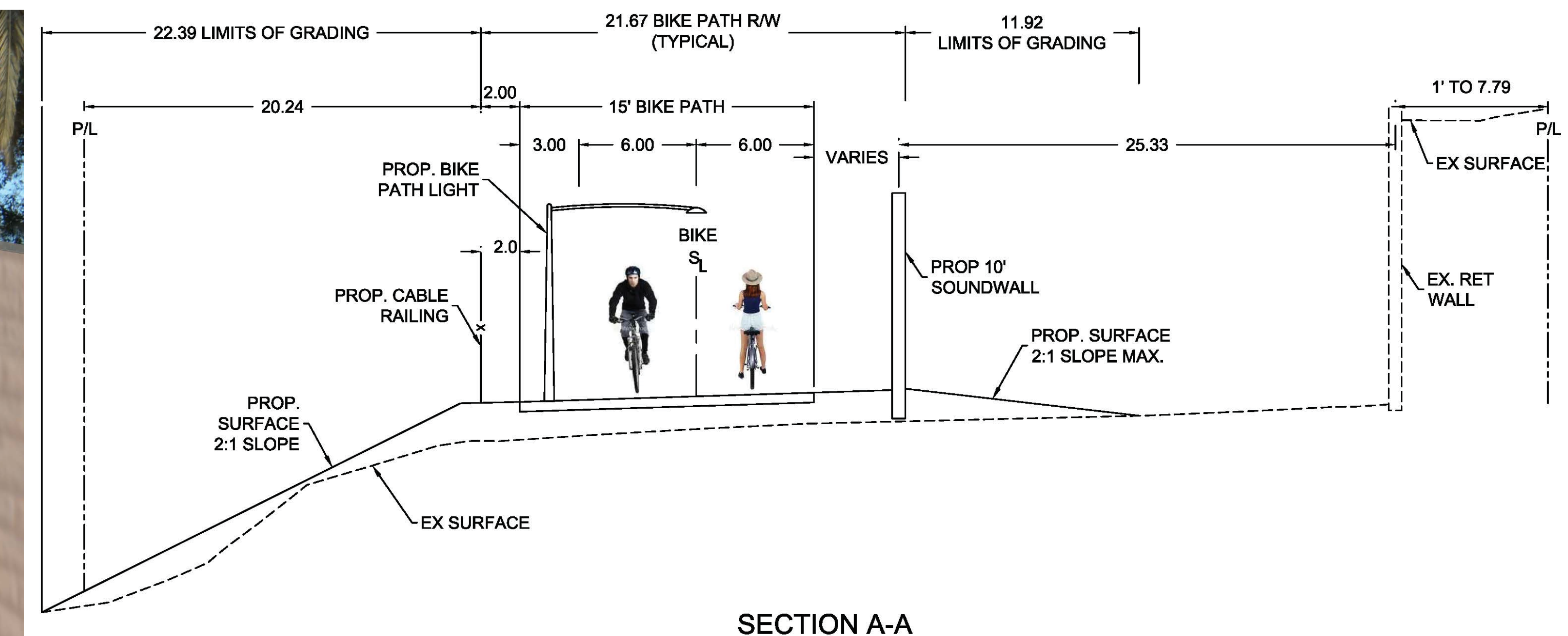
**Illustrative View**

(Looking south from Northvale Rd. toward proposed soundwall and bike path)



**Illustrative View**

(Looking west along proposed bike path)

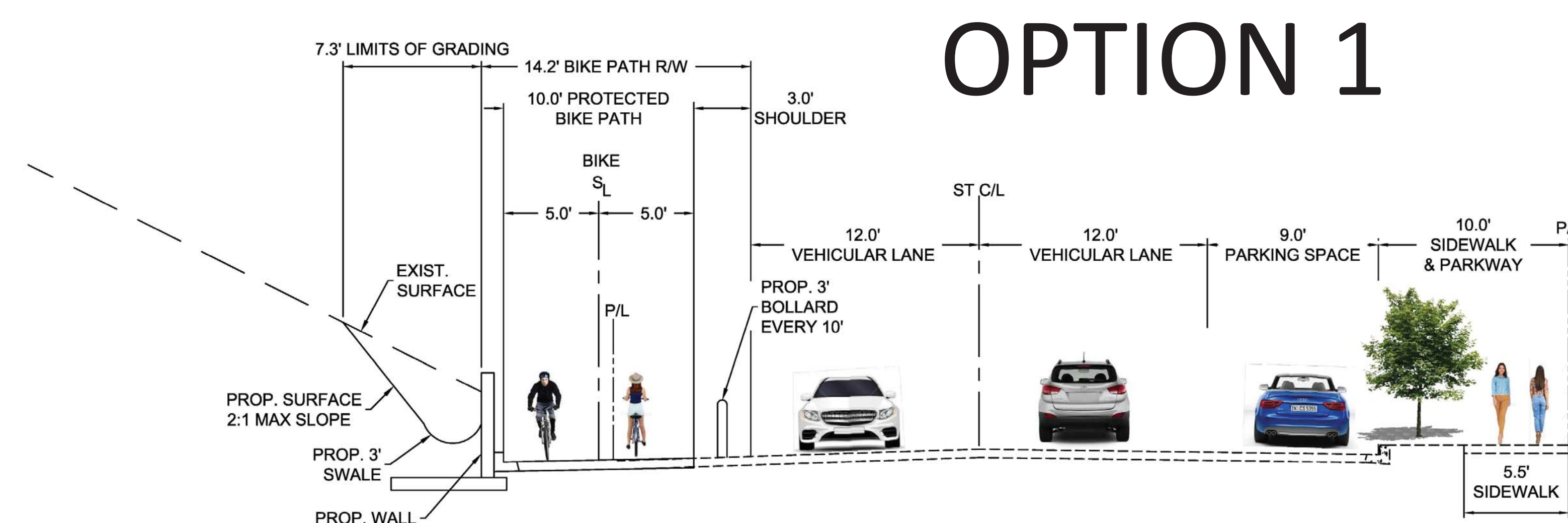
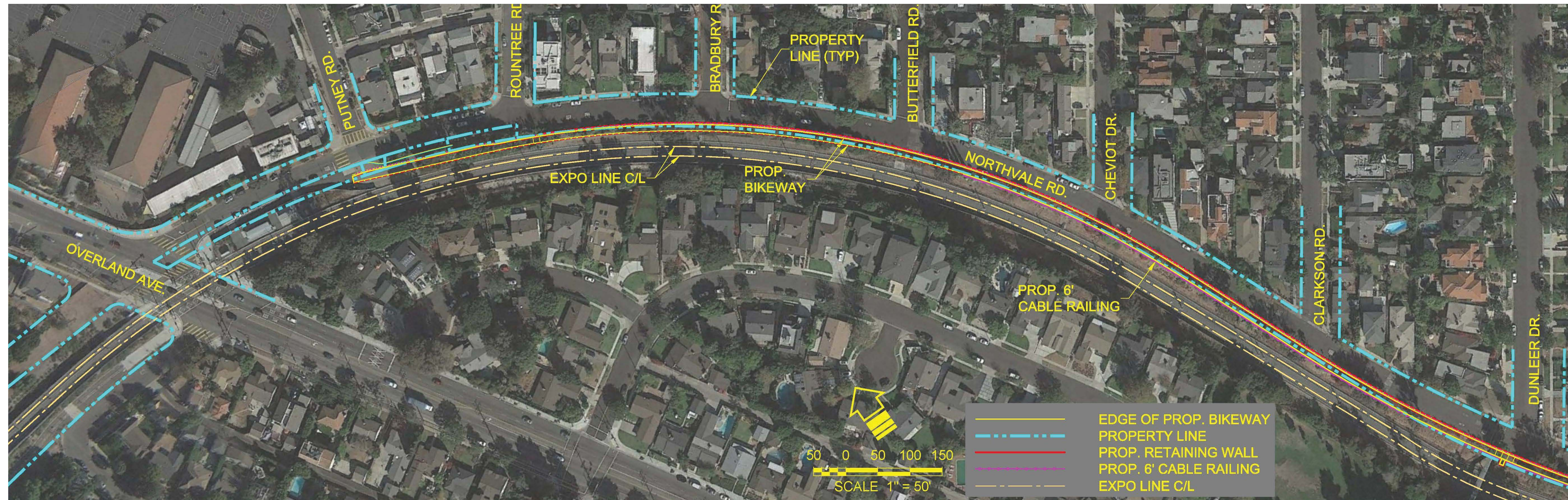


### Design Goals:

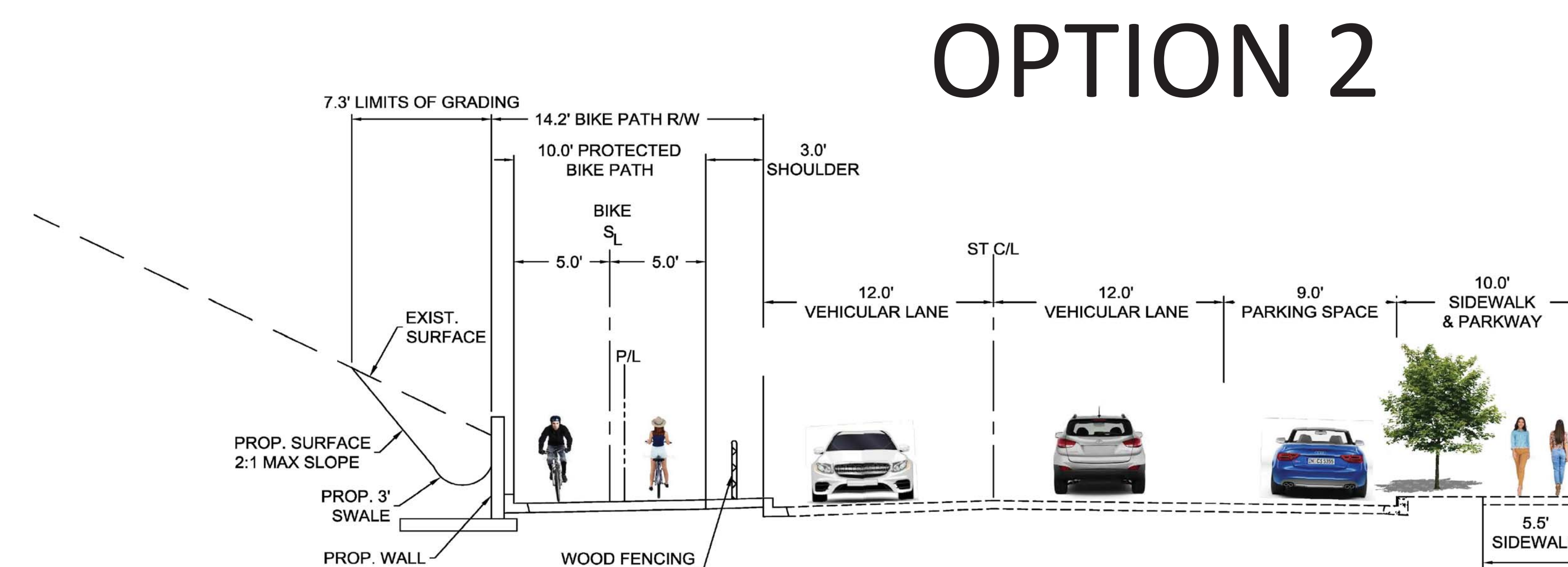
- Minimize tunnel effect
- Minimize impacts to neighbors
- Low impact development

# EXPO II BIKE PATH - NORTHVALE GAP CLOSURE

## Segment 2: Dunleer Dr. to Putney Rd.



Example of protected bike lane in Downtown LA



Illustrative view looking west on Northvale Rd.

- Design based on preferred alternative from previous public input
- Two potential variations on this alternative currently being considered:

**Option 1:** Two-way on-street bike lanes protected by bollards.

- At grade with street
- Continuous open access
- Susceptible to debris and water

**Option 2:** Two-way off-street bike path with wood posts and cable railing.

- Grade separation from street
- Better aesthetics
- Limited access points